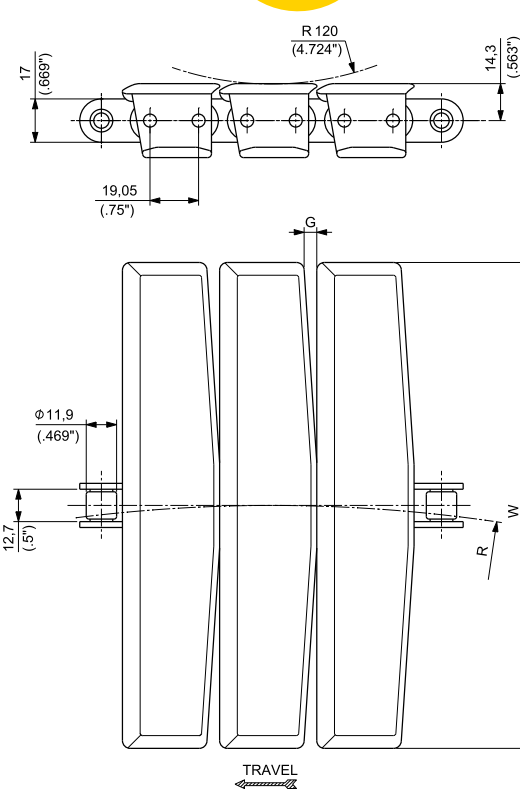
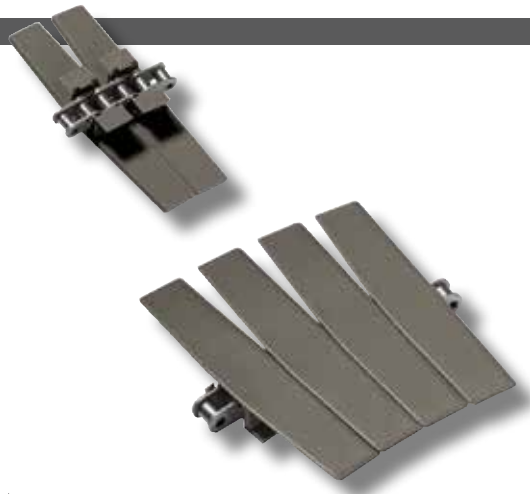


TAB
PLASTIC FLIGHTS
3/4" PITCH ROLLER CHAIN
REDUCED FLIGHT GAP
THICKNESS 4 mm (0.157")
HINGE 32,1 mm (1.264")

POWERED BY BASE ROLLER CHAIN MADE BY REGINA IN ITALY



Gap comparison between 1863T and 1873T series

1863T

CHAIN WIDTH	SIDEFLEXING RADIUS R		SIDEFLEXING GAP G		STRAIGHT RUNNING GAP G	
	mm	inch	mm	inch	mm	inch
3 1/4	400,0	15,75	3,2	0,126	0	0
4 1/2	457,2	18	5,8	0,228	1,3	0,051
7 1/2	609,6	24	8,6	0,339	2,7	0,106
12	609,6	24	15,6	0,614	6,2	0,244

1873T

CHAIN WIDTH	SIDEFLEXING RADIUS R		SIDEFLEXING GAP G		STRAIGHT RUNNING GAP G	
	mm	inch	mm	inch	mm	inch
3 1/4	355,6	14	10,5	0,413	5,2	0,205
4 1/2	355,6	14	13,5	0,531	6,7	0,264
7 1/2	457,2	18	17,5	0,689	8,7	0,343
12	609,6	24	21,0	0,827	10,5	0,413



Materials see page 14



Sprockets see page 154



Corner tracks see page 344



Applications see page 22

MATERIALS		ITEM DESCRIPTION	PART NUMBER	CONNECTING LINK PART NUMBER	WIDTH W		SIDEFLEXING RADIUS R		WORKING LOAD (25°C/77°F)		WEIGHT	
Flight	Base Chain				mm	inch	mm	inch	N	lbs	kg/m	lbs/ft
ULTRA PERFORMANCE HOMOPOLYMER DELRIN® UP	CARBON STEEL	UP 1863T K 2 1/4	UP1863KS/000	18/0873	57,1	2,25	457,2	18,00	4500	1,012	2,04	1,37
		UP 1863T K 3 1/4	UP1863KD/000		82,6	3,25	457,2	18,00	4500	1,012	2,17	1,46
		UP 1863T K 4 1/2	UP1863KG/000		114,3	4,50	457,2	18,00	4500	1,012	2,32	1,56
		UP 1863T K 7 1/2	UP1863KL/000		190,5	7,50	609,6	24,00	4500	1,012	2,68	1,80
		UP 1863T K 12	UP1863KN/000		304,8	12,00	609,6	24,00	4500	1,012	3,16	2,13
UP 1863T K 16	UP1863KJ/000	406,4	16,00	750,0	29,53	4500	1,012	3,53	2,37			
ABRASION RESISTANT POLYAMIDE (1) AR	CARBON STEEL	AR 1863T K 3 1/4	AR1863KD/000	18/SS873AB	82,6	3,25	400,0	15,75	4500	1,012	2,12	1,42
		AR 1863T K 4 1/2	AR1863KG/000		114,3	4,50	457,2	18,00	4500	1,012	2,24	1,50
ULTRA PERFORMANCE HOMOPOLYMER DELRIN® UP	STAINLESS STEEL	UP 1863T SS K 2 1/4	UP1863SKS/000		57,1	2,25	457,2	18,00	3500	787	1,99	1,34
		UP 1863T SS K 3 1/4	UP1863SKD/000		82,6	3,25	457,2	18,00	3500	787	2,11	1,42
		UP 1863T SS K 4 1/2	UP1863SKG/000		114,3	4,50	457,2	18,00	3500	787	2,27	1,52
		UP 1863T SS K 7 1/2	UP1863SKL/000	190,5	7,50	609,6	24,00	3500	787	2,63	1,76	
		UP 1863T SS K 12	UP1863SKN/000	304,8	12,00	609,6	24,00	3500	787	3,11	2,09	
UP 1863T SS K 16	UP1863SKJ/000	406,4	16,00	750,0	29,53	3500	787	3,47	2,33			

(1) ACTUAL WIDTH CAN BE UP TO 0,5% GREATER THAN NOMINAL WIDTH



Standard packaging:
Rolls of 3,048 m (10 feet)